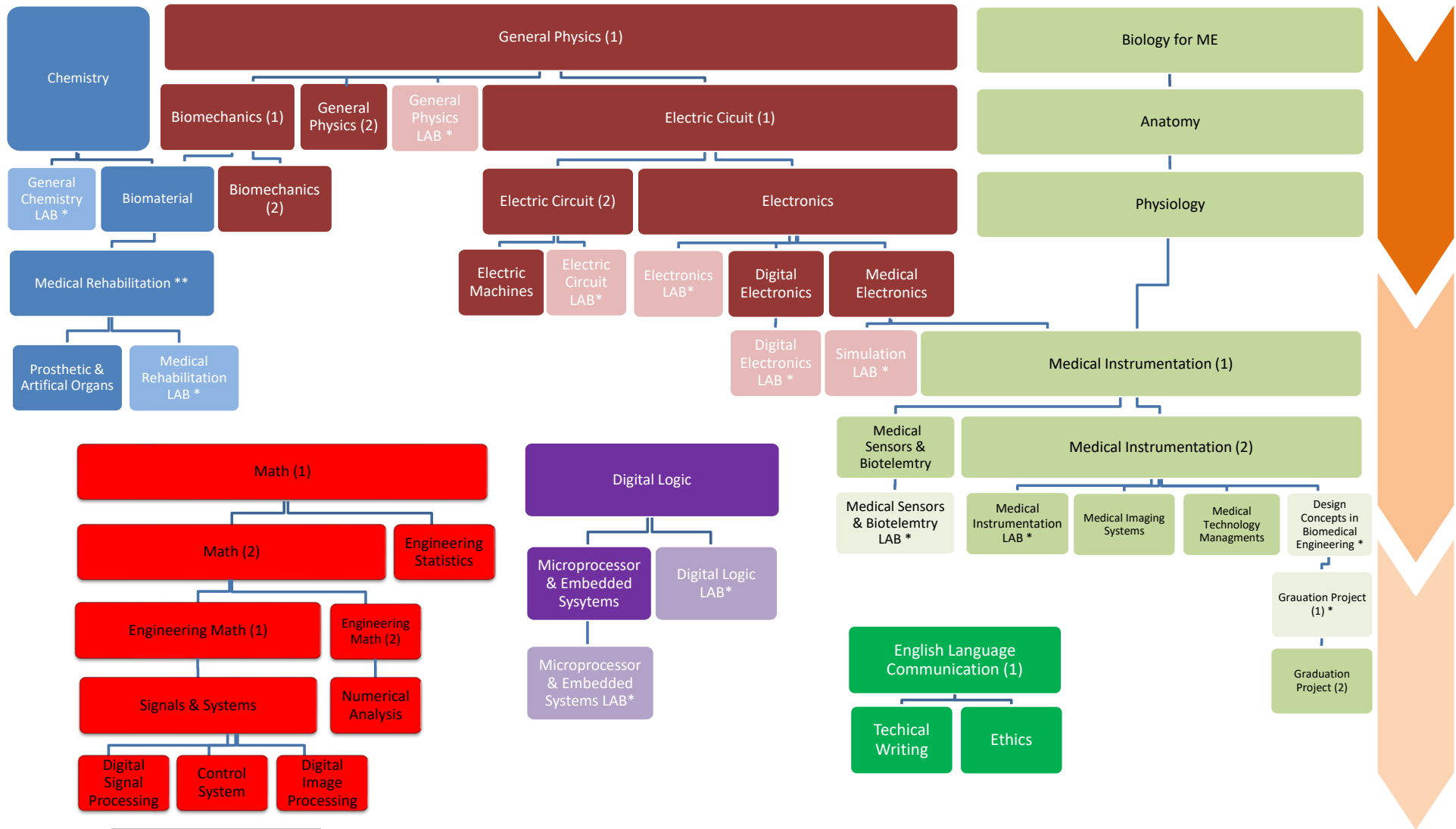


Faculty of Engineering

Advisory Plan 2014-2015

Medical Engineering Department



No Pre-requisite

Arabic Language Communication Skills (1)	Military Science	Engineering Workshop	Engineering Drawing	Elective University Requirments	Elective University Requirments	Elective University Requirments
Elective University Requirments	Elective University Requirments	National Education	Computer Skills (Engineering)	Elective Major Requirement	Elective Major Requirement	Field Training Pass (115 H)

Note: Each color is a separate chain unless there is a line connect the course to another chain

* Co-requisite

** This course has "Medical Sensors & Biotelemetry" as a second Co-requisite